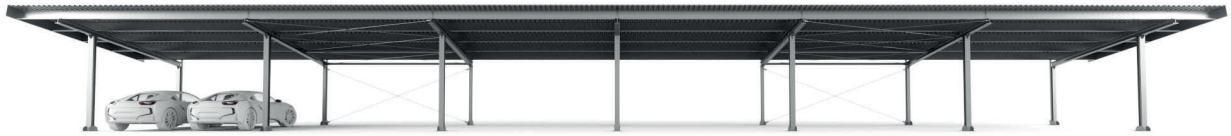




mounting
systems



E-Port Line

Application	Ground-mount
Configuration	One segment offers space for two cars
Distance between supports	5500 mm On request: +/-
Example calculation with a module size of +/- 1700 x 1000 mm	<p>1 Segment = 2 Autos, 24 Module ca. 6105 x 6200 mm</p> <p>3 Segmente = 6 Autos, 66 Modules ca. 6105 x 17200 mm</p> <p>7 Segmente = 14 Autos, 144 Modules ca. 6105 x 39200 mm</p> <p>10 Segmente = 20 Autos, 198 Module ca. 6105 x 55700 mm</p>
Roof inclination	10°
Snow load	TBA
Wind load	TBA
Corrosion resistance	TBA
Foundation	Soil expertise necessary (The soil expertise is the responsibility of the customer)
Color	Standard: Zinc, RAL 7016
Warranty	10 Years
Segments	



Open Terrain



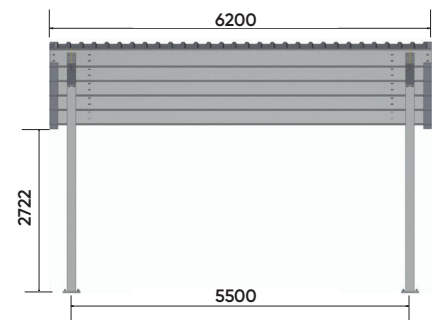
Trapezoidal sheet



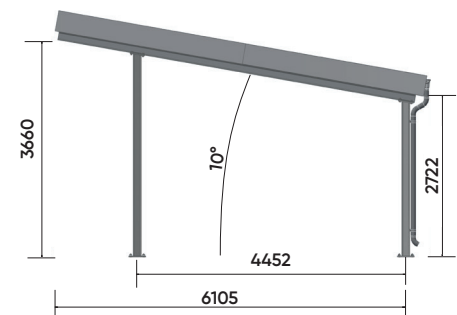
Framed module



Orientation landscape



Frontview



Sideview

